

USER GUIDE

Applicable to the GammaOS Android Build Versions:

This User Guide applies to the following versions:

- Android 13 (20260702.113154)

Revision History / Manual Updates

*This section documents changes and updates made on this **User Guide**.*

INDEX

APPLICABLE TO THE GAMMAOS ANDROID BUILD VERSIONS.....	2
REVISION HISTORY / MANUAL UPDATES.....	3
USER SAFETY.....	6
WHAT'S INCLUDED WITH Y1000.....	7
KNOWING YOUR NEW Y1000.....	8
THE Y1000.....	9
MAIN BUTTONS - FUNCTIONS.....	10
SPECIFICATIONS.....	11
F2R POWER MANAGEMENT SYSTEM (PMS).....	12
GETTING STARTED.....	12
POWER.....	13
SETUP.....	13
INSTALLATION.....	14
MY GAMMA APP.....	15
F2R ROADBOOK APP.....	18
GAMMA OS ANDROID UPDATES (OTA).....	18
ACCESSORIES.....	19
DR001 – WIRED DEDICATED REMOTE FOR Y1000 (MOTO VERSION).....	19
DRA01 – WIRED DEDICATED REMOTE FOR Y1000 (AUTO VERSION).....	19
BZ001 WIRED DEDICATED BUZZER ALARM FOR Y1000.....	21
CLEANING AND STORAGE.....	22
ENVIRONMENT SAFETY.....	22
WARRANTY AND REPAIR SERVICE.....	23
DISPOSAL.....	25
FAQs.....	26
TROUBLESHOOT.....	30
SUPPORT & CONTACT INFORMATION.....	32

IMPORTANT:

Before using your F2R Y1000, please read this Setup, Safety and Warranty Guide.

USER SAFETY

Read this important safety information before using your Y1000. Follow and retain all information included with your device to ensure safe use.

- **Navigation Purpose Only:** Y1000 is designed and intended solely for navigation purposes. It should not be used for any other purpose while operating the vehicle.
- **Safety First:** The user's safety is of paramount importance. Using this device while riding or driving can create serious accidents, injuries, or even death. Always prioritize safe riding practices and follow all traffic laws and regulations while using this device.
- **Use with a Handlebar Controller:** To enhance safety and convenience, we strongly advise using this device with a compatible handlebar controller. This will allow you to control the device without taking your hands off the handlebar.
- **Minimize Distractions:** While riding, avoid using non-navigation apps or engaging in activities that may distract your attention from the road and traffic conditions. Not respecting these recommendations can result in catastrophic consequences.
- **Stay Updated:** Make sure to keep your device updated with the latest software and safety features to maximize its effectiveness as a navigation tool.
- **Responsibility:** By using this device, you acknowledge that you are responsible for your own safety and the safety of others. Use this device responsibly and in accordance with applicable laws and regulations.
- **Data Sharing Consent:** By using this device, you consent to the sharing of relevant information with the F2R R&D team to facilitate bug identification, enhance product performance, and ensure efficient management of warranty services.
- **Manufacturer's Liability:** The manufacturer is not liable for any accidents, injuries or damages that may occur as a result of using this device.

By using Y1000, you agree to abide by the safety guidelines outlined in this user manual. If you do not agree or have any doubts about its safe use, please refrain from using the device.

This information is also shown on the device when it is switched on.

WHAT'S INCLUDED WITH Y1000

- 1 x F2R Y1000 Digital Device (Chassis + Gamma Box)
- 1 x Y1000 Reinforced Power Cable (12V)
- 1 x Assembly Kit (2x Bushings, 2x M6x16 Bolts and 4x Grommets)
- 1 x Y1000 Screen Protector Kit

Accessories (available separately or in Bundles):

- F2R Y1007 – Y1000 Support Bracket
- F2R DR001 - Wired Dedicated Remote for Y1000 (MOTO version)
- F2R DRA01 - Wired Dedicated Remote for Y1000 (AUTO version)
- F2R BZ001 – Wired Dedicated BUZZER Alarm for Y1000

Spare or Optional Accessories (sold separately):

- F2R Y1003 – Y1000 Cover
- F2R Y1004 – Y1000 Screen Film Protector
- F2R Y1005 – Y1000 Desk Kit
- F2R Y1006 – Y1000 Mounting Hardware Kit
- F2R Y1023 – Y1000 Reinforced Power Cable (12V)

KNOWING YOUR NEW Y1000

The F2R *Y1000* is a **navigation device** powered by the Android operating system, designed and developed based on F2R's extensive experience in roadbook navigation and tested in the harsh conditions of rally environments. Built with deep knowledge of various navigation apps, it is **intended exclusively as a navigation aid**, delivering reliability and performance for off-road and rally use.

The *Y1000* features, among other apps, a Roadbook app designed by F2R to transform the traditional roadbook navigation into a highly interactive and digital experience. Our goal was to digitalize **Roadbook navigation without changing its essence**.

Please note that the *Y1000* is not a conventional tablet and, as such, it does not include an internal battery, built-in camera, speakers or microphone. It is possible to install 3rd party apps in it, however, it is not its purpose nor was it designed to be used as a standard tablet. **⚠ F2R will not give any assistance to other apps other than the MyGamma and F2R Roadbook apps. ⚠**

NOTE: *Your device might look slightly different from the illustrations in this guide, depending on the version of the operating system and apps.*

The Y1000



1. Main Switch
2. LED indicator
3. Power Cable
4. Digital Remote Cable (Other accessories)
5. Buzzer Cable
6. GPS Antenna
7. WIFI Antenna (Gamma Box)
8. Home Button
9. Dimmer Button

Main Buttons - Functions

- **Main Switch** 

Long Press - Switches device ON/OFF

10 Second Press - Force Shut Down

Note: If the screen is in Standby, pressing any physical button (on the device or on the F2R remote – DR001 or DRA01) will wake the screen.

- **Dimmer Button** 

Rotation - Adjusts screen brightness

Short Press - Touch Screen Lock/Unlock (notification will appear on top of the screen)

Long Press - Standby/Power Saving Mode

Note: This turns off the screen, not the device! The device remains operational in a low-power state, ideal for situations like refueling or control points (CPs) during a race...

Press (when screen is in Standby) - Screen ON

- **Home Button** 

Press - Android Home Function

Note: If the screen is in Standby, pressing any physical button (on the device or on the F2R remote – DR001 or DRA01) will wake the screen.

Long Press - Opens F2R Roadbook APP

Specifications

Information on device specs can be consulted in the [Product Datasheet](#).

F2R Power Management System (PMS)

The **F2R Power Management System** is designed to optimize vehicle battery usage by intelligently managing the device's power consumption.

It allows the device to:

- Detect inactivity when the equipment is not in use.
- Automatically power off in specific situations to prevent unnecessary battery drain.
- Enter power-saving mode when needed to reduce power consumption.

This system helps protecting the vehicle's battery.

In the **MyGamma app**, users can adjust the PMS timers on the Device Data page within preset limits: Screen Dimming from 1 to 15 minutes, Power Saving from 5 to 30 minutes, and Full Switch-Off from 30 to 120 minutes.

The settings must follow this order: Power Saving must be set longer than Screen Dimming, and Full Switch-Off must be set longer than Power Saving.

The factory default PMS timings are:

After 2 minutes stationary (without any movement) - Screen dims.

After 5 minutes stationary (without any movement) - Device enters power saving mode/lock screen.

After 1 hour stationary (without any movement) - Device switches off completely

NOTE:

Interactions with the touchscreen do not interrupt the PMS from activating. This is intentional to prevent unintended interactions, such as raindrops triggering the screen when the device is left unlocked in wet conditions.

The PMS can only be interrupted while the device is in *Power Saving Mode/Lock Screen*, under the following conditions:

- A physical button is pressed on the device or on the remote (DR001/DRA01);
- Motion is detected while the screen is dimmed (not during standby or shutdown).

GETTING STARTED

Power

1. Unbox your device and accessories.
2. Y1000 **does not have an internal battery**. Connect the power cable to the vehicle battery for power, by connecting the red and black terminals to the positive and negative battery terminals, respectively. The device can be connected to any 12 or 24V vehicle battery.

 **Do not use any other power supply cable other than the one provided with Y1000.** 

Please refer to the [Y1023 instructions](#) for proper installation and routing of the Power Cable. For KTM Rally MY18-26, the dedicated Y1024 power cable can be used instead of Y1023.

Setup

3. Turn your Y1000 on. The red led will turn on. When you turn your F2R Y1000 on for the first time, the *Android Setup Wizard* will guide you through the initial setup process.
4. Complete the *Android Setup Wizard*:
 - 4.1. *Language Selection*: Choose your preferred language.
 - 4.2. *Connect to Wi-Fi*: Select and connect to a Wi-Fi network or a phone hotspot to access the internet.

Note: The Y1000 does not support a SIM card/mobile data connection.
 - 4.3. *Location Services*: You should allow this option to enable the F2R Roadbook app and other navigation apps to function properly.
 - 4.4. *Date & Time*: in this option you should set your time zone and adjust current date and time.
 - 4.5. Complete the setup. – Let's Rally -

- 4.6. Read and Accept the Warning/Disclaimer and start exploring your device.

Using Bluetooth Devices:

- Enable Bluetooth in **Settings >> Bluetooth** and pair with your device.
Note: The F2R Y1000 does not have built-in speakers, however it can be used with Bluetooth intercoms/headphones for audio output.

Using Passwords:

- Set up screen lock in **Settings >> Security**.
This option will influence standby. It is activated each time standby is set or when the device is switched on.
It may be requested by the device to set up a pin screen lock if the user owns an Organizational Google account.

Accessing Device Settings:

- Customize settings from the Settings app.

Installation

Y1000 can only be mounted in a vertical/portrait position, in any preferred angle.

Included with the device, there are 2x Bushings, 2x M6x16 Bolts and 4x Grommets. ⚠ **It is mandatory to use the supplied hardware** ⚠, to guarantee the device's correct installation and to prevent eventual damages to it.

This assembly kit can be used to mount the Y1000 on its F2R Mounting Bracket (sold separately) or on a navigation tower.



Please refer to the [Y1007 instructions](#) for proper installation.

Important considerations regarding GPS Receiver:

- Avoid placing any other radio frequency antennas near the device GPS receiver.
- Do not cover the antenna area, as it needs a clear view of the sky. Covering this area will reduce the performance of the GPS.

⚠ Not respecting the mounting guidelines provided can compromise the device reliability and correct function. ⚠

NOTE: Damages caused by using accessories other than those provided with the device are not covered under warranty.

MY GAMMA APP

The MyGamma app is the companion app for the Y1000. It brings together device identification, remote-profile guidance, support tools, system data, adjustable PMS timers, and device-specific notifications from F2R in a single interface.

1. Home Screen

- Displays the Device ID, a unique identifier for sharing Roadbook files via the RDS platform. More information: f2r.pt/device-id-rds

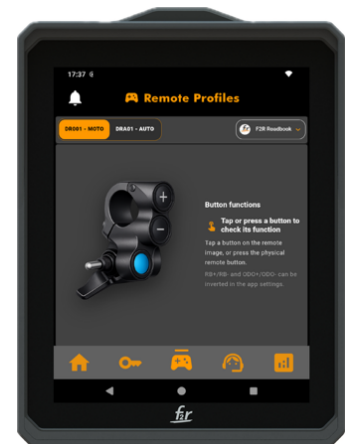


2. Device ID

- Users can retrieve and display their unique Device ID.
- A QR code is generated, allowing organizers to easily identify and assign the device ID to specific equipment.

3. Remote Profiles

- Allows users to check how the remote control (DR001 and DRA01) interacts with the supported apps, by pressing the connected DR001 or DRA01 physically or by tapping the buttons on the screen.
- The app can be selected in the top right corner, and the page shows how each button works for the chosen app profile.

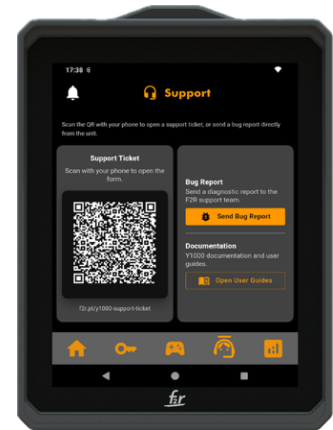


4. Support Page

The Support page brings together the support tools available on the Y1000, including QR access to the Support Ticket form, in-app Bug Report submission, and direct access to the user guides.

Note: When opened through the QR code, the Support Ticket form automatically includes the unit's serial number.

Bug reports can be submitted directly from the unit. This feature is useful for reporting firmware or software issues on the Y1000. When submitting a report, users can add comments describing the issue and must provide an email address. After successful submission, a support ticket is automatically created and the F2R Support team will contact the user.



5. Device Data & System Information

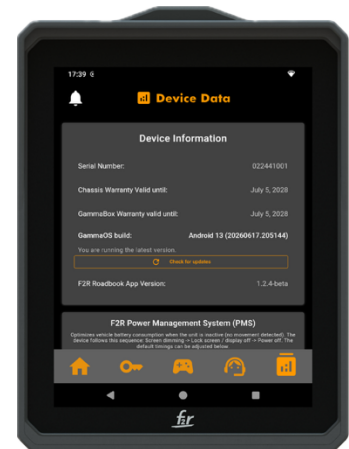
Helps the user monitor the unit and tune the inactivity timings to the vehicle and riding conditions.

Displays key device information and PMS controls, including:

- Serial Number, Chassis and Gamma Box warranty validity, GammaOS build, OS update status, and F2R Roadbook App version.
- Adjustable F2R Power Management System (PMS) timers for screen dimming, power saving, and full switch-off when the device is inactive.
- Total riding/driving distance and total usage time since the first boot of the device.

It also helps the user monitor the unit and tune the inactivity timings to the vehicle and riding conditions.

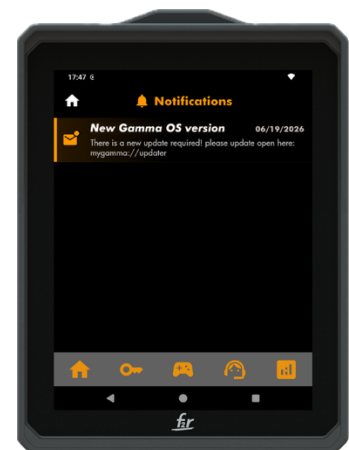
Note: The warranty details will remain empty until the device has been used for the first time.



6. Notifications

The MyGamma app includes an inbox for important messages sent by F2R to a specific device.

Notifications can include OS update notices, warranty or service advisories, and other system-related information. Messages can be opened in detail directly in the app.



F2R ROADBOOK APP

Before launching the F2R Roadbook app for the first time, ensure you are signed in to a Google Play account to receive updates and that the latest version is installed.

Please refer to the [F2R Roadbook App User Manual](#) for detailed usage instructions and information.

GAMMA OS ANDROID UPDATES (OTA)

GammaOS updates are not mandatory, but they are recommended because they can deliver bug fixes, stability improvements, and new features.

Warning:

- An active internet connection is required to download and install the GammaOS update.
- It is not recommended to update the device during races or competitions.
- Always perform updates with the vehicle's engine running. **NEVER** switch off the device during an update!
- If the device switches off during an update, it will need to be sent back to F2R.

If a new GammaOS update is available for your device, a notification can appear in the **MyGamma** app.

You can manually check for updates in two ways:

1. MyGamma: Open Device Data and tap Check for updates.
2. Android System: Go to Settings > System > Updater and tap the Refresh button.

Installation: When an update is available, MyGamma can also open the Android installation menu directly. You may check all GammaOS Android Change Log here: <https://f2r.pt/support/y1000-changes>

ACCESSORIES

DR001 – Wired Dedicated Remote for Y1000 (MOTO version)



&

DRA01 – Wired Dedicated Remote for Y1000 (AUTO version)



The DR001 and DRA01 remotes are designed to enhance the usability of your F2R Y1000 by providing convenient control over various functions. They work with different navigation and media apps and include dedicated profiles with automatic switching based on the active application. They also include a Mouse profile that can be activated manually as a temporary backup to operate the device if touch control is unavailable.

(The Mouse Profile is a feature from the GammaOs Android Build mentioned in this manual, not a specific version of DR001 or DRA01)

Connecting the Remote to Y1000

Ensure the remote cable is securely connected to the F2R Y1000. **Connect the remote's blue cable connector to the device's blue cable connector, ensuring the pins are properly aligned before tightening.**

Please refer to the [DR001 instructions](#) and [DRA01 instructions](#) for proper installation of the remotes.

Exclusive Check Function for F2R Roadbook App

The DR001 and DRA01 remotes feature an exclusive Check function, seamlessly integrated with the F2R Roadbook app. This function enhances navigation by allowing users to quickly validate roadbook notes while riding.

The **Check Note function can only be activated using an F2R remote (DR001 or DRA01)**. It provides several essential navigation aids:

- Mark notes as checked – Keep track of navigation progress and ensure no steps are missed.
- Reset the secondary odometer – Useful for navigation on complex notes.
- Advance to the next note – Streamlines navigation by progressing to the next roadbook note.

- Reset the main odometer – Allows for quick reset as needed.

This functionality improves efficiency, accuracy, and ease of use, ensuring a smoother navigation experience, without changing the roadbook essence.

For further details on using this function on the app, refer to the [F2R Roadbook App User Manual](#).

List of apps compatible with F2R remotes (DR001 and DRA01)

- F2R Roadbook
- Rally Roadbook
- Rally Roadbook Reader
- Piste Roadbook
- MRB
- OsmAnd
- Guru Maps
- DMD2
- Amazon Music
- Spotify
- YouTube Music

The F2R Remote follows a generic control profile, allowing it to interact with various Android apps using standard media control functions. This means that, in addition to controlling the F2R Roadbook app, it can also be used with other apps that recognize these standard key inputs.

Generic Profile Mapping:

- "+" Button → Volume Up
- "-" Button → Volume Down
- RB Toggle Forward / RB + Button → Next Song
- RB Toggle Back / RB - Button → Previous Song
- Check Button (Blue Button) → Play/Pause

This makes the remote versatile for media apps, navigation apps, and any software that supports standard Android media key inputs.

You can also review the Remote Profiles in MyGamma to see how each supported app behaves and how each button is mapped.

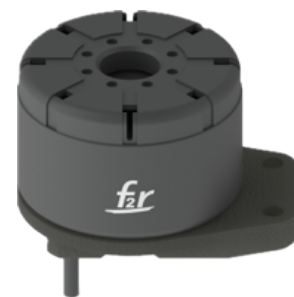
Mouse Profile (backup control)

- To activate Mouse Profile on the DR001 or DRA01, press and hold ODO- and RB- for 5 seconds.
- To exit Mouse Profile, press and hold ODO- and RB- again for 5 seconds. After exiting Mouse Profile, the remote will operate according to the active app profile.
- In Mouse Profile, the buttons are mapped as follows: RB+ = Down, RB- = Up, ODO+ = Left, ODO- = Right, and CHECK = Select.
- To return to the Android home screen while using Mouse Profile, press the HOME button on the left side of the device.



BZ001 Wired Dedicated BUZZER Alarm for Y1000

Please refer to the [BZ001 instructions](#) for proper installation and to the [F2R Roadbook App User Manual](#) for detailed information on BZ001 settings adjustments and profiles.



CLEANING AND STORAGE

- Keep the cable caps closed when they are not being used to prevent dust/residues from getting in;
- Clean the screen with a soft, dry cloth;
- To clean the contact pins in the box, use only contact cleaner or compressed air;
- Avoid exposing the device to liquids (⚠ **Never use a jet wash on the device!** ⚠);
- Keep the device in a protective case during travel.

ENVIRONMENT SAFETY

Conditions That Require Immediate Action:

Stop using your device and unplug it if you notice:

- ⚠ Cracked or damaged screen
- ⚠ Damaged device fixing system (bottom pins or side threads damaged)
- ⚠ Signs of condensation inside the screen
- ⚠ Smoke
- ⚠ Cut rubber on GPS receiver on the chassis or on the Gamma Box WIFI Antenna

Please create a  [Support Ticket](#) if any of these situations occur.

WARRANTY AND REPAIR SERVICE

The Y1000 comes with a 3-year warranty starting from the day the device has its first use. Two different warranties may be shown: one for the Gamma Box (detachable from the Chassis) and another for the Chassis.

You can check warranty validity in the MyGamma app on the Device Data page.

Note: *The warranty details will remain empty until the device has been used for the first time.*



IMPORTANT - Situations not eligible for warranty:

Chassis:

- Opening the chassis' housing;
- Devices modified by the user (housing, cables);
- Damages caused on cables, connectors and M6 fixing system;
- Damages caused by inappropriate cable connections;
- Damages caused by not following the safety recommendations and correct use of the device.

Gamma Box:

- Opening the box's housing;
- Connecting the pins of the box to any other device, damaging it;
- Damages caused by not following the safety recommendations and correct use of the device.

Situations not eligible for repair service:

- Extremely damaged units with no salvageable parts

In case of malfunctioning or damage to the device, do not attempt to repair it yourself. Contact customer support or an authorized service provider for repairs or maintenance.

DISPOSAL

End cycle/unusable devices should be sent to F2R for proper recycling.

FAQs

1. Is the equipment designed to withstand falls?

Yes, it's built with a robust machined aluminum housing that can withstand many falls, although not all. It includes an impact-resistant glass to better handle impact with the ground, helmet or chest.

2. Is it waterproof? What if the motorcycle falls into the water?

It is fully waterproof, even when completely submerged in water, up to a depth of 50 cm.

3. How is the power supply connected to the motorcycle?

Power supply is direct and permanently connected to the motorcycle's battery. The device includes a power management unit to manage the device consumption and avoid the bike reaching a critical point in which it cannot be started.

4. Will the device drain my battery if shut down? No.

5. What if I forget to shut down the device?

The device follows the configured PMS timings. By factory default, it dims after 2 minutes stationary, enters power saving after 5 minutes, and switches off after 1 hour. These timings can be adjusted in MyGamma within the allowed ranges. NOTE: F2R is not liable for damage to batteries.

6. If the handlebar remote control fails, what options do I have for operating the equipment?

You can operate the equipment through the touchscreen.

7. Can the equipment be used in other vehicles (quads, SSVs, cars), or is it only for motorcycles?

It can be used in any type of vehicle. The GPS used is highly accurate and functions well even in cars and SSVs.

8. Since it uses an *android* operating system, can I install other applications on the device?

Yes, you can install any applications available on Google Play Store. However, please note that Y1000 is primarily designed for navigation purposes. Installing applications not intended for this use can compromise the device's operation and user safety when used while riding.

9. How are apps updated? What about the operating system?

The apps can be updated via Google Play Store. GammaOS updates are delivered over-the-air (OTA) and can be checked either in MyGamma on the Device Data page or in Settings > System > Updater.

10. Does the equipment come with a warranty?

Yes, the equipment comes with a 3-year warranty.

11. Can I use my current CR001 control remote with Y1000?

F2R Y1000 has a specific remote control (DR001-moto and DRA01-Auto) that connects directly to the equipment through cable, ensuring greater reliability. This new control is ergonomically designed for easy RB digital operation, including the new CHECK functionality.

Old controls, F2R CR001 or ICO, can be used with the Bluetooth BOX provided by ARN.

12. How do I know how DR001/DRA01 behaves in each app?

Open Remote Profiles in the MyGamma app. Select the app in the top-right corner, then press the connected DR001/DRA01 or tap the on-screen buttons to see how each function behaves.

13. Can I connect 2 remotes by cable? No.

14. Can I connect an external GPS receiver? No.

15. Is it possible to have the odometer working through a wheel sensor?

Not at the moment, but this accessory is currently in development.

16. What are the GPS characteristics?

The GPS in this equipment can track all the four constellations simultaneously (GPS, Galileo, Glonass, and Beidou). It offers a refresh rate up to 25Hz, and an accuracy of less than 1 meter CEP.

17. Do you need to lock the screen when using the device?

No, but it is recommended to prevent accidental touches. Rain does not affect the screen, but heavy splashes may create unintentional touches.

18. Can I use this device at a specific rally/competition?

Please check with the Rally's/Competition's Organization directly.

19. Can I use PDF roadbooks on the F2R Roadbook app?

No. The F2R Roadbook app only supports OpenRally file formats: .GPX and .RBK. PDF files are not compatible.

20. Is it possible for the device to convert PDF roadbooks to OpenRally files for use in the F2R Roadbook app?

No. Currently, there is no way to convert PDF roadbooks into an OpenRally file (.GPX or .RBK) for use in the F2R Roadbook app.

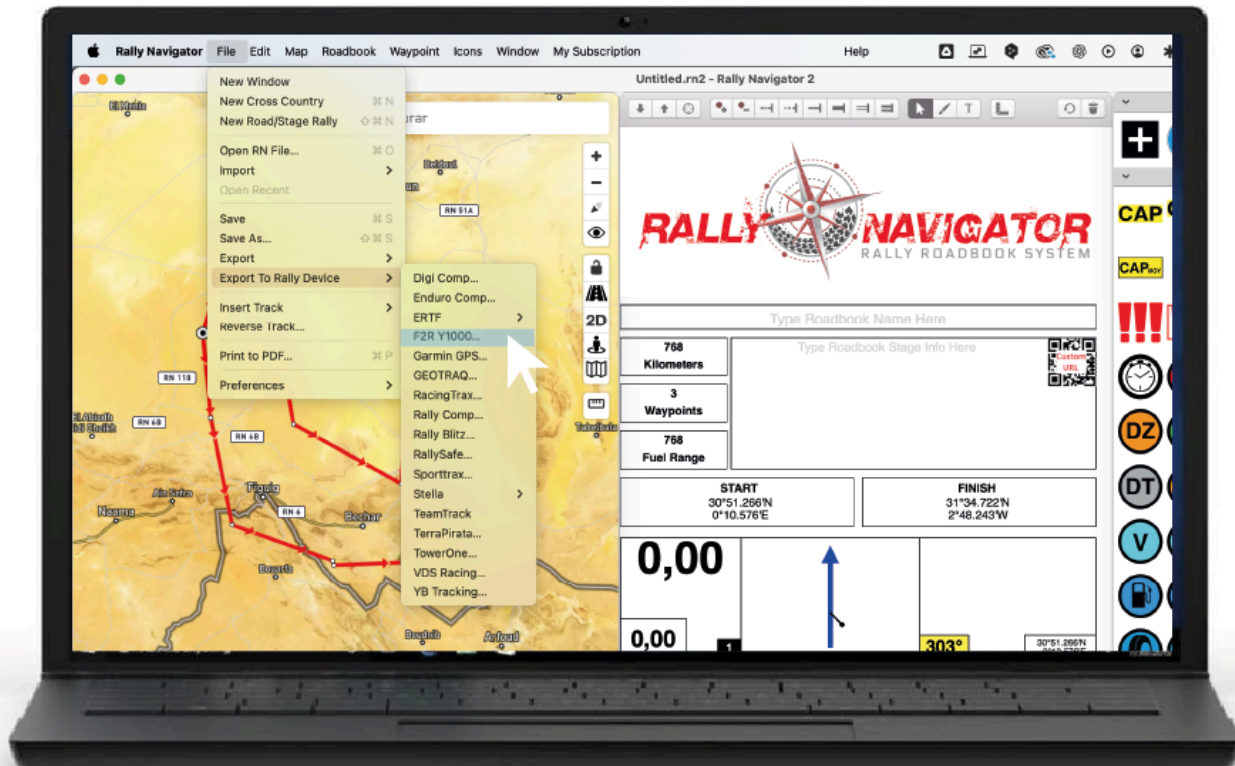
21. How can I use a PDF roadbook on the Y1000?

Since the F2R Roadbook app does not support PDF files, you can install a third-party app from Google Play that works with PDF roadbooks.

Example: Rally Roadbook Reader by Rally Navigator.

22. How can I export a roadbook from Rally Navigator for the F2R Roadbook app?

1. Open Rally Navigator.
2. Go to File > Export to Rally Device > F2R Y1000.
3. The file created will be ready to import directly into the F2R Roadbook app.



23. How can I connect the Y1000 to the internet?

On the device, select and connect to a Wi-Fi network or a phone hotspot to access the internet.

NOTE: The Y1000 does not support a SIM card/mobile data connection.

24. Can I rotate the screen on Y1000?

No. Y1000 can only be used in a vertical/portrait position.

25. How do I remove GammaBox from the Chassis?



To remove the Gamma Box, apply light pressure and slide it in the direction indicated by the arrows. The movement is smooth and requires minimal force - simply push gently until the Gamma Box is released from its slot. Make sure the device is turned off before performing this procedure.

26. How do I find my Serial Number?

You can find the Serial Number of your F2R Y1000 in three ways:

1. In the MyGamma app: Open the last tab to view the device serial number.
2. On the Device Settings: Go to Settings > About Device > Model > Serial Number.
3. On the Gamma Box: The Serial Number is printed on the side of the Gamma Box, next to the QR code.



TROUBLESHOOT

1. Issue: Red LED Light Is On, but There's No Image on screen

>>Solution:

- *Check if the Gamma Box is properly fitted to the chassis.*
- *Check the Brightness Level*
- *Verify that the display is not in standby mode.*

2. Issue: Device Stuck on “Checking Info” in Android Setup Wizard

>>Solution:

- *If this step takes more than 30 minutes, abort the setup and restart the process.*
- *Retry the setup wizard offline by skipping Wi-Fi and logging in later.*
- *If the issue persists, reset the device and attempt the setup again in offline mode (skip internet connection during setup).*

3. Issue: The F2R Roadbook app crashes repeatedly.

>>Solution:

- *Wait for Google Play to update itself. This update usually occurs automatically after the first login.*
- *Ensure you are properly logged into Google Play with your account.*
- *Check if your profile picture or initials appear in the top-right corner of the Play Store.*
- *If your account is not correctly set up, log in again and try reopening the app.*

4. Issue: The Device Has No Location

>>Solution: Follow these steps:

1. Check Antenna
 - *Ensure the top GPS antenna is not covered and has a clear view of the sky for proper satellite reception.*
2. Check Location Settings
 - *Go to Settings > Location and verify that it is ON.*
 - *If it's OFF, turn it ON and check if the location starts working.*
3. Check App Location Permissions
 - *Go to Settings >> App Location Permissions and ensure the necessary apps have location access.*
4. Check GammaOS Android Version
 - *Ensure the device is running the latest GammaOS Android version installed. Check for updates in MyGamma on the Device Data page, or use the Android system updater if needed.*
5. Restart the Device
 - *If the location is still not working, restart the device and try again.*
6. Reset Power Connection, if the issue persists
 - *Remove the red power cable and wait 10 seconds.*
 - *Reconnect the cable and power on the device again.*

If all steps are followed correctly, the location should now work.

5. Issue: My device shuts down while in use.

>>Solution:

- *Ensure the battery connection is secure and that the battery washers are properly installed.*
- *Inspect the red connector on the device to confirm it is firmly connected.*

6. Issue: The touch operation stopped working.

>> Solution:

- *Restart the device. This should restore normal touch operation.*
- *If the touch does not recover, press and hold ODO- and RB- for 5 seconds to temporarily activate the remote mouse mode.*
- *In mouse mode, RB+ moves up, RB- moves down, ODO+ moves right, ODO- moves left, and CHECK works as Select.*
- *To go back, the recommended option is to press the HOME button on the left side of the device.*
- *If the issue persists after restarting the device and using mouse mode, please create a support ticket.*

SUPPORT & CONTACT INFORMATION

If you have any questions, require technical assistance, or need to request a warranty service, please contact **F2R Support**:

 **Email:** support@f2r.pt

 **Website:** www.f2r.pt

 **Phone:** +351 215 89 07 91

 **Address:**

PRACETA JORGE BARRADAS Nº13 LOJA A
2745-864 QUELUZ – SINTRA
PORTUGAL


To create a support ticket, please visit:

 f2r.pt/y1000-support-ticket/

LEGAL DISCLAIMER

The **F2R Y1000** is intended **exclusively for navigation purposes**. F2R is not responsible for any **misuse** of the device or for any damages caused by **improper installation, unauthorized modifications, or third-party accessories**.

By using this device, the user agrees to follow all **safety guidelines, warranty conditions, and legal restrictions** outlined in this manual.

 **IMPORTANT:** Failure to adhere to these instructions may result in **warranty voidance**.

FINAL REMARKS

We appreciate your trust in **F2R** products. We continuously strive to improve our devices and user experience. If you have any feedback, we encourage you to **reach out to our team**.