



This Buzzer is strictly designed for use with the F2R y1000 device

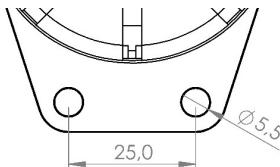
Installation:**1. Connecting the M8 Connector**

- Align the 4 pins of the M8 connector with the corresponding M8 plug on the y1000 device. Ensure the connector is parallel to the display when inserted correctly.
- Hand-tighten the connector to secure it. Do not use tools to prevent damage to the connector.

2. Mounting the Buzzer

Attach the buzzer to your motorcycle using one of the following methods:

- Zip Ties: Use the two included zip ties to fasten the buzzer securely.
- Bolts: Use M5 bolts (not included) to secure the buzzer through the holes in the rubber support for a more permanent installation.

**Buzzer Notifications:**

The buzzer will “beep” in the following situations:

- When powering on/off the y1000 digital device.
- For specific alerts generated by the F2R Roadbook app.

Package Includes:

- 1 Buzzer with Support
- 2 Zip Ties